

INTERIOR FILM

vont
WE MAKE YOUR IDEAS STICK!



VONT INTERIOR FILM NEW COLLECTION

VONT INTERIOR FILM

Discover Vont, A Japanese brand manufacturing in South Korea that offers high-quality decorative architectural films with unique embossed surfaces. With a wide range of designs to choose from, our films are easy to apply and perfect for adding texture and depth to any room. Explore our lineup and transform your space with Vont's stunning interior films.

Index

vont
WE MAKE YOUR IDEAS STICK!

PREMIUM MATT

VONT INTERIOR FILM

Discover Vont, A Japanese brand manufacturing in South Korea that offers high-quality decorative architectural films with unique embossed surfaces. With a wide range of designs to choose from, our films are easy to apply and perfect for adding texture and depth to any room. Explore our lineup and transform your space with Vont's stunning interior films.

Index

E series

| Pattern No. | Page |
|-------------|------|
| E/EF B1 | 36 |
| E/EF 09 | 36 |
| E/EF 10 | 35 |
| E | 12 |
| E/EF 20 | 36 |
| E | 23 |
| E | 26 |
| E/EF 28 | 36 |
| E/EF 30 | 33 |
| E/EF 31 | 36 |
| E/EF 37 | 33 |
| E/EF 40 | 35 |
| E/EF 52 | 37 |
| E | 56 |
| E/EF 61 | 37 |
| E/EF 72 | 12 |
| E/EF 82 | 35 |
| E/EF 84 | 12 |
| E/EF 86 | 11 |
| E/EF 87 | 12 |
| E/EF 91 | 11 |
| E/EF 92 | 12 |
| E/EF 93 | 12 |
| E/EF 94 | 12 |
| E/EF 96 | 11 |
| E/EF 97 | 11 |
| E | 98 |
| E/EF 101 | 36 |
| E/EF 102 | 11 |
| E/EF 106 | 11 |
| E/EF 107 | 11 |
| E/EF 109 | 12 |
| E/EF 110 | 12 |
| E | 111 |
| E/EF 113 | 11 |

| Pattern No. | Page |
|-------------|------|
| E/EF 114 | 11 |
| E/EF 115 | 12 |
| E/EF 119 | 11 |
| E/EF 120 | 11 |
| E/EF 121 | 11 |
| E/EF 122 | 11 |
| E/EF 128 | 11 |
| E/EF 134 | 11 |
| E | 140 |
| E | 141 |
| E/EF 142 | 33 |
| E | 143 |
| E/EF 148 | 35 |
| E/EF 153 | 11 |
| E/EF 164 | 37 |
| E/EF 165 | 12 |
| E/EF 166 | 12 |
| E/EF 167 | 35 |
| E/EF 169 | 36 |
| E/EF 170 | 36 |
| E | 171 |
| E/EF 178 | 34 |
| E/EF 179 | 33 |
| E/EF 186 | 35 |
| E/EF 209 | 34 |
| E | 211 |
| E | 230 |
| E/EF 237 | 36 |
| E/EF 243 | 37 |
| E/EF 282 | 36 |
| E/EF 314 | 12 |
| E/EF 315 | 12 |
| E/EF 361 | 35 |
| E/EF 381 | 36 |
| E/EF 383 | 36 |

| Pattern No. | Page |
|-------------|------|
| E | 385 |
| E/EF 1100 | 34 |
| E/EF 1103 | 37 |
| E/EF 1107 | 33 |
| E/EF 1109 | 37 |
| E/EF 1112 | 33 |
| E/EF 1113 | 33 |
| E/EF 1114 | 36 |
| E | 1115 |
| E/EF 1116 | 37 |
| E | 1118 |
| E/EF 1124 | 16 |
| E/EF 1126 | 16 |
| E/EF 1127 | 16 |
| E/EF 1128 | 11 |
| E/EF 1129 | 16 |
| E/EF 1130 | 16 |
| E/EF 1131 | 16 |
| E/EF 1132 | 16 |
| E/EF 1134 | 12 |
| E/EF 1135 | 11 |
| E/EF 1136 | 12 |
| E/EF 1137 | 12 |
| E/EF 1138 | 12 |
| E/EF 1139 | 16 |
| E/EF 1140 | 16 |
| E/EF 1143 | 37 |
| E/EF 1162 | 16 |
| E/EF 1175 | 16 |
| E/EF 1182 | 11 |
| E/EF 1191 | 12 |
| E/EF 1192 | 12 |
| E/EF 1193 | 12 |
| E/EF 1194 | 12 |
| E/EF 1199 | 11 |

O series

| Pattern No. | Page |
|-------------|------|
| O/OF 03 | 32 |
| O | 158 |
| O/OF 207 | 32 |
| O | 217 |
| O/OF 225 | 31 |
| O/OF 227 | 32 |
| O | 253 |
| O | 256 |
| O | 267 |
| O/OF 284 | 32 |
| O/OF 326 | 31 |
| O/OF 349 | 32 |
| O/OF 388 | 31 |
| O | 402 |
| O/OF 960 | 31 |
| O | 962 |
| O | 968 |
| O | 971 |
| O/OF 2001 | 31 |
| O | 2006 |
| O | 2010 |
| O | 2017 |
| O/OF 2018 | 15 |
| O | 2024 |
| O/OF 2026 | 14 |
| O | 2028 |
| O/OF 2029 | 14 |
| O/OF 2030 | 14 |

EE series

| Pattern No. | Page |
|-------------|------|
| EE/EEF 123 | 23 |
| EE | 124 |
| EE/EEF 125 | 23 |
| EE | 445 |
| EE | 446 |
| EE/EEF 451 | 20 |
| EE/EEF 452 | 26 |
| EE/EEF 453 | 26 |
| EE/EEF 454 | 26 |
| EE/EEF 455 | 26 |
| EE | 460 |
| EE | 462 |
| EE | 466 |
| EE | 498 |
| EE/EEF 984 | 21 |
| EE | 985 |
| EE/EEF 986 | 21 |
| EE | 3003 |
| EE | 3005 |
| EE | 3006 |
| EE/EEF 3007 | 30 |
| EE | 3021 |
| EE | 3022 |
| EE/EEF 3026 | 15 |
| EE/EEF 3028 | 15 |
| EE/EEF 3029 | 15 |
| EE/EEF 3030 | 15 |
| EE/EEF 3050 | 17 |
| EE | 3051 |
| EE/EEF 3054 | 22 |
| EE | 3058 |
| EE/EEF 3060 | 25 |
| EE/EEF 3061 | 25 |
| EE/EEF 3062 | 25 |
| EE/EEF 3064 | 30 |

| Pattern No. | Page |
|-------------|------|
| EE/EEF 3065 | 30 |
| EE/EEF 3066 | 30 |
| EE/EEF 3069 | 30 |
| EE/EEF 3071 | 13 |
| EE/EEF 3073 | 13 |
| EE/EEF 3076 | 15 |
| EE/EEF 3080 | 20 |
| EE/EEF 3081 | 20 |
| EE/EEF 3082 | 20 |
| EE/EEF 3083 | 20 |
| EE/EEF 3084 | 30 |
| EE/EEF 3085 | 21 |

VE series

| Pattern No. | Page |
|-------------|------|
| VE | 403 |
| VE | 410 |
| VE | 433 |
| VE | 434 |
| VE | 4000 |
| VE | 4004 |
| VE/VEF 4010 | 21 |
| VE/VEF 4014 | 20 |
| VE/VEF 4018 | 09 |
| VE | 4019 |
| VE/VEF 4020 | 09 |
| VE/VEF 4021 | 09 |
| VE/VEF 4022 | 09 |
| VE/VEF 4023 | 09 |
| VE | 4024 |

ZM series

| Pattern No. | Page |
|-------------|------|
| ZM/ZMF 5500 | 04 |
| ZM/ZMF 5506 | 04 |
| ZM/ZMF 5507 | 03 |
| ZM/ZMF 5508 | 03 |
| ZM/ZMF 5509 | 03 |
| ZM/ZMF 5511 | 04 |
| ZM/ZMF 5512 | 05 |
| ZM/ZMF 5519 | 05 |
| ZM/ZMF 5522 | 05 |
| ZM/ZMF 5528 | 06 |
| ZM/ZMF 5529 | 06 |
| ZM/ZMF 5531 | 06 |

MPM series

| Pattern No. | Page |
|---------------|------|
| MPM/MPMF 7011 | 07 |
| MPM/MPMF 7012 | 08 |
| MPM/MPMF 7013 | 08 |
| MPM/MPMF 7014 | 08 |
| MPM/MPMF 7015 | 08 |

FT series

| Pattern No. | Page |
|-------------|------|
| FT | 8000 |
| FT | 8001 |
| FT | 8002 |
| FT | 8003 |
| FT | 8004 |

X series

| Pattern No. | Page |
|-------------|------|
| X | 904 |
| X | 940 |
| X | 6010 |

R series

| Pattern No. | Page |
|-------------|------|
| R/RF | 5012 |
| R | 5027 |

MP series

| Pattern No. | Page |
|-------------|------|
| MP/MPF 3508 | 14 |
| MP/MPF 3509 | 14 |

SP series

| Pattern No. | Page |
|-------------|------|
| SP/SPF 4500 | 19 |
| SP/SPF 4501 | 19 |
| SP/SPF 4502 | 19 |
| SP/SPF 4503 | 19 |



PREMIUM MATTE

VONT INTERIOR FILM NEW COLLECTION



Premium Wood



Pine

ZM/ZMF 5508



Oak

ZM/ZMF 5500



Pine

ZM/ZMF 5509



Ash

ZM/ZMF 5506



Ash

ZM/ZMF 5507



Teak

ZM/ZMF 5511



PREMIUM MATTE

VONT INTERIOR FILM NEW COLLECTION



Premium Wood



Teak

ZM/ZMF 5512



Standard Oak

ZM/ZMF 5519



Standard Oak

ZM/ZMF 5522



Premium Fabric & Stone



Real Fabric

ZM/ZMF 5528



Travertine

ZM/ZMF 5529



Travertine

ZM/ZMF 5531



PREMIUM MATTE

VONT INTERIOR FILM NEW COLLECTION



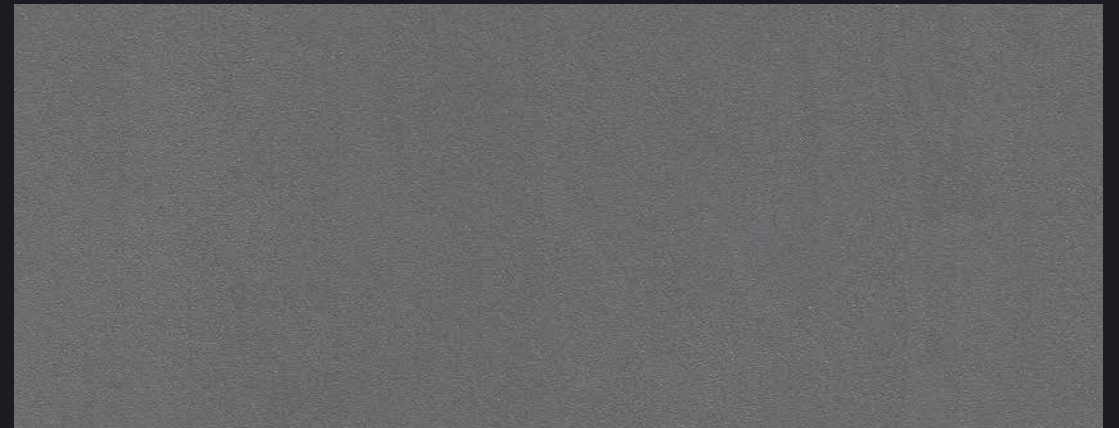
MPM/MPMF 7011

* The images are for illustrative purposes and may differ from actual product.

Minimal Cloud

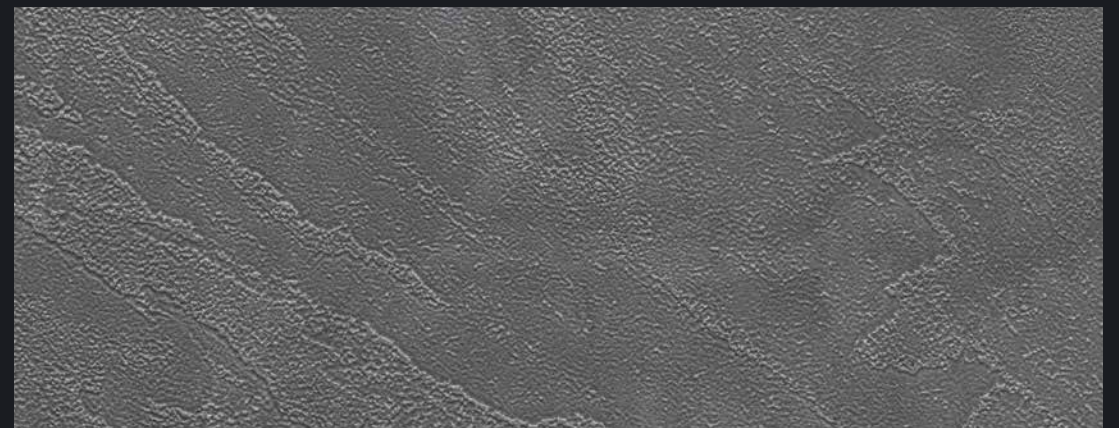
MPM/MPMF 7011

Premium Metal



Minimal Cloud

MPM/MPMF 7012



Cloud Metal

MPM/MPMF 7015



Cloud Metal

MPM/MPMF 7013



Cloud Metal

MPM/MPMF 7014

PREMIUM MATTE

VONT INTERIOR FILM NEW COLLECTION

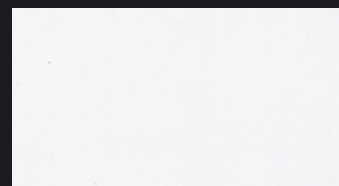


Soft Matte



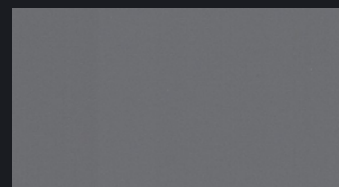
Soft Matte

VE 4024



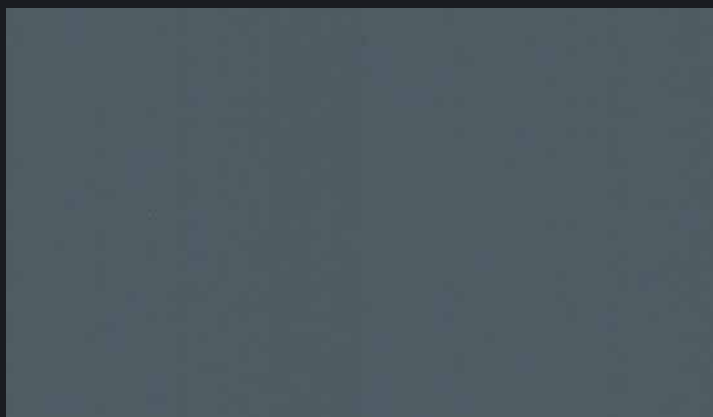
Soft Matte

VE/VEF 4018



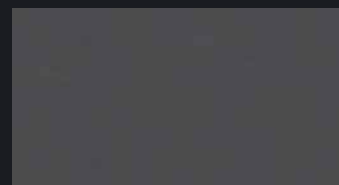
Soft Matte

VE 4019



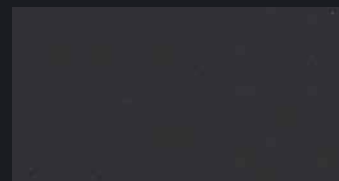
Soft Matte

VE/VEF 4021



Soft Matte

VE/VEF 4020



Soft Matte

VE/VEF 4023



Soft Matte

VE/VEF 4022

SOLID

SOLID

VONT INTERIOR FILM NEW COLLECTION



E/EF 121



E/EF 113



E/EF 122



E/EF 120



E/EF 128



E/EF 91



E 111



E/EF 97



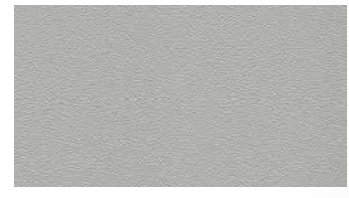
E/EF 1135



E/EF 106



E/EF 114



E/EF 1199



E/EF 102



E/EF 134



E/EF 107



E/EF 96



E/EF 86



E/EF 119



E/EF 1182



E/EF 1128



E/EF 153



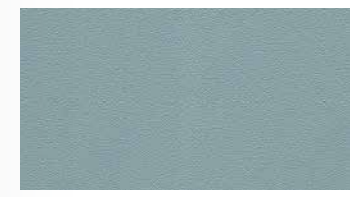
E/EF 110



E/EF 165



E/EF 115



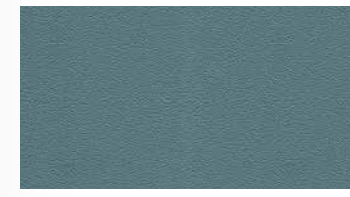
E/EF 1138



E/EF 109



E/EF 315



E/EF 1191



E/EF 92



E/EF 166



E/EF 1192



E/EF 1194



E/EF 72



E/EF 1193



E/EF 84



E/EF 93



E/EF 1137



E/EF 1136



E/EF 314



E/EF 1134



E/EF 87



E/EF 94

SOLID

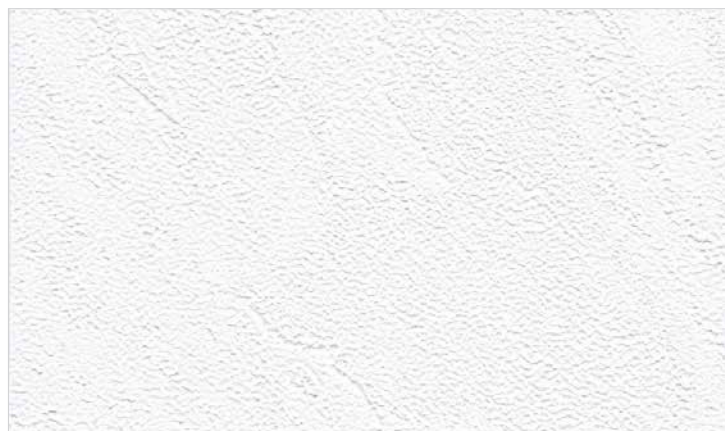
VONT INTERIOR FILM NEW COLLECTION



EE /EEF 3071 · E /EF 165

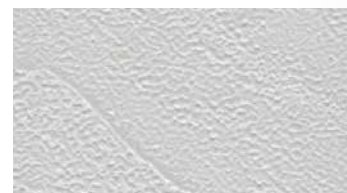
* The images are for illustrative purposes and may differ from actual product.

Embossed Pattern



Embossed Pattern

EE/EEF 3071



Embossed Pattern

EE/EEF 3073

Embossed Pattern



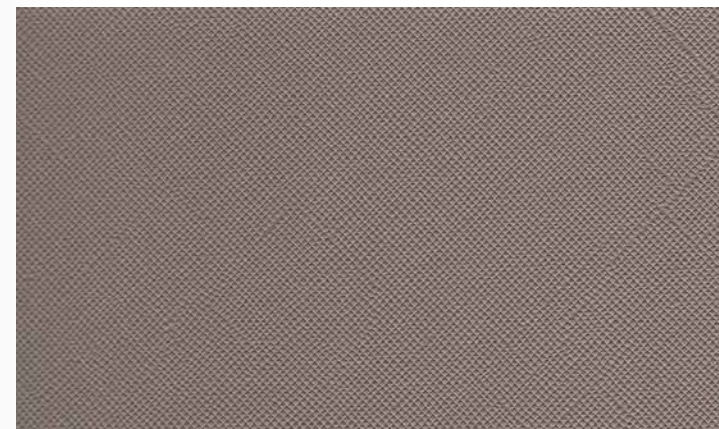
Embossed Pattern

O/OF 2030



Embossed Pattern

O/OF 2029



Embossed Pattern

MP/MPF 3509



Embossed Pattern

MP/MPF 3508



Embossed Pattern

O 2028



Embossed Pattern

O/OF 2026

Painted Wood



Painted Wood **0 2017**



Painted Wood **0/OF 2018**



Painted Wood **EE/EEF 3028**



Painted Wood **EE/EEF 3026**



Painted Wood **EE/EEF 3029**



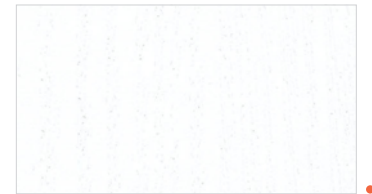
Painted Wood **EE/EEF 3030**



Painted Wood **EE/EEF 3076**



Painted Wood **E/EF 1132**



Painted Wood **E/EF 1129**



Painted Wood **E/EF 1139**



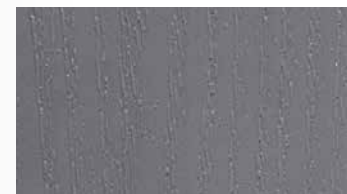
Painted Wood **E/EF 1162**



Painted Wood **E/EF 1124**



Painted Wood **E/EF 1130**



Painted Wood **E/EF 1131**



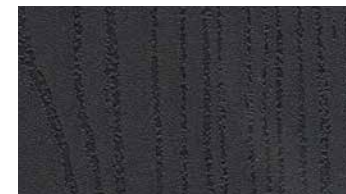
Painted Wood **E/EF 1175**



Painted Wood **E/EF 1140**

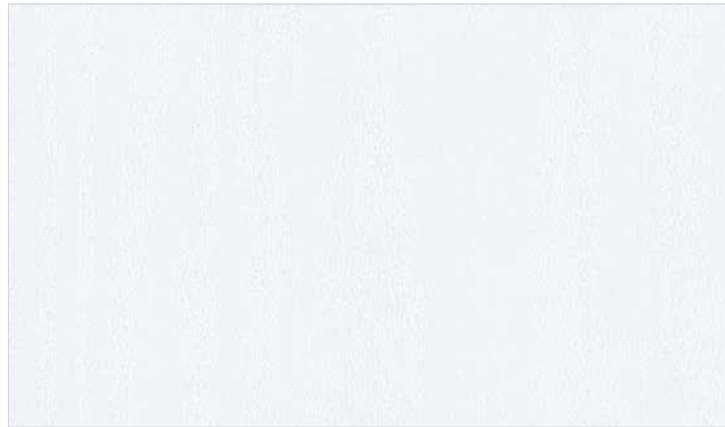


Painted Wood **E/EF 1126**



Painted Wood **E/EF 1127**

Pearl Wood



Pearl Wood **EE/EEF 3050**



Pearl Wood **EE 3051**



Pearl Wood **EE 466**

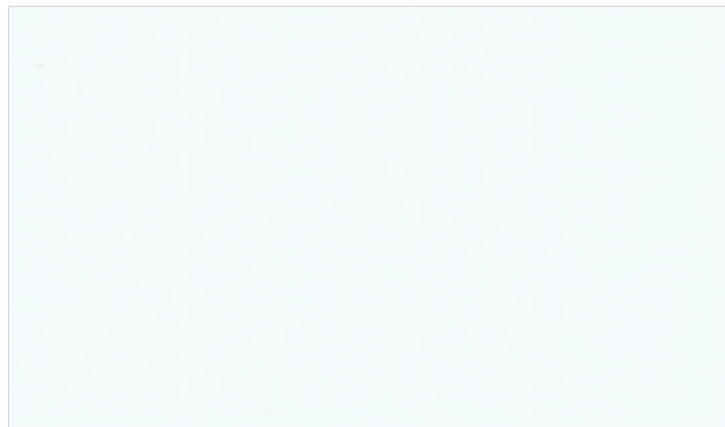


Pearl Wood **VE 433**



Pearl Wood **VE 434**

High-Gloss



High-Gloss **VE 403**

STONE METAL

STONE / METAL

VONT INTERIOR FILM NEW COLLECTION



Metal Concrete

SP/SPF 4502 · SP/SPF 4503

* The images are for illustrative purposes and may differ from actual product.



Aspetto

SP/SPF 4503



Aspetto

SP/SPF 4502



Aspetto

SP/SPF 4501



Aspetto

SP/SPF 4500

Concrete



Modern Stone

EE/EEF 3082



Modern Stone

EE/EEF 3080



Modern Stone

EE/EEF 3081



Modern Stone

EE/EEF 3083



Rustic Stone

EE 462



Concrete

EE/EEF 451



Real Stone

VE/VEF 4014



VE/VEF 4014

* The images are for illustrative purposes and may differ from actual product.

Concrete



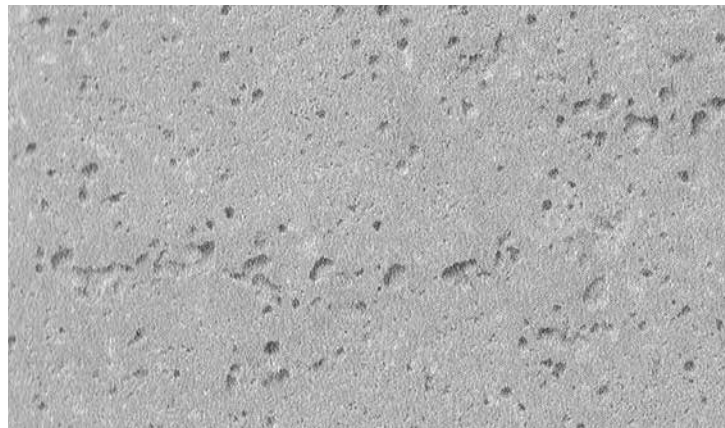
Concrete **VE/VEF 4010**



Modern Concrete **EE/EEF 3085**



Peacock Natural **EE 3003**



Natural Stone **X 6010**



Concrete **EE/EEF 984**



Concrete **EE/EEF 984**



Concrete **EE 985**



Concrete **EE/EEF 986**

Marble



Marble **EE 445**



Marble **EE 445**



Marble **EE 446**



Carrara **EE/EEF 3054**



Carrara **EE/EEF 3054**



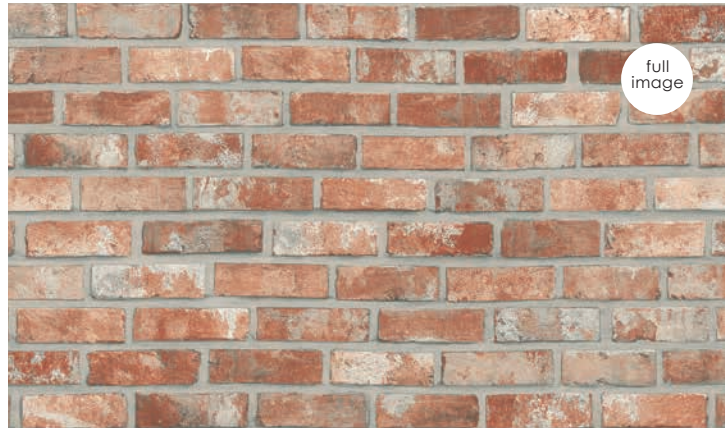
Matte Marble **EE 3058**



EE /EEF 3054

* The images are for illustrative purposes and may differ from actual product.

Stone Wall

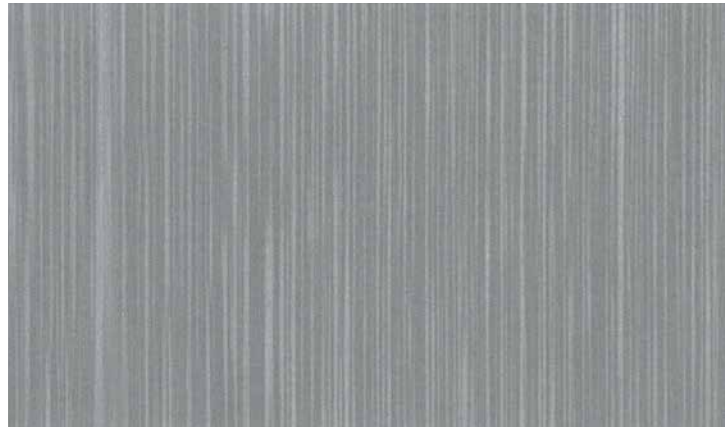


Bricks 0 968



Bricks 0 968

Metal



Metal EE 3022



Metal EE 124



Metal EE 3021



Metal EE/EEF 125



Metal EE/EEF 123



Metal EE 498

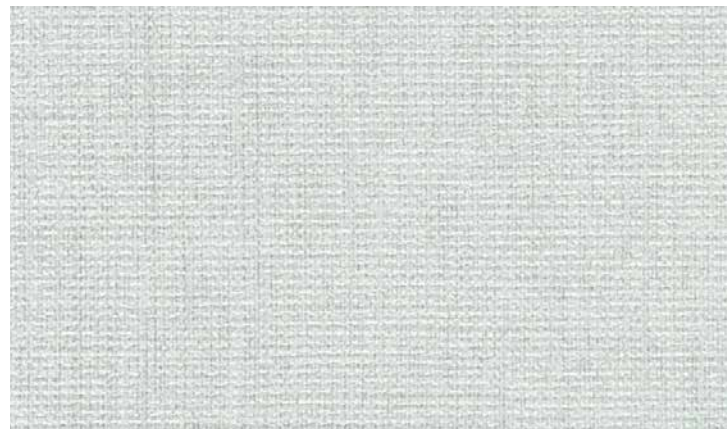
FABRIC LEATHER

FABRIC / LEATHER

VONT INTERIOR FILM NEW COLLECTION



Fabric



Linen

EE/EEF 3060



Linen

EE/EEF 3061



Linen

EE/EEF 3062

Fabric



Fabric

EE/EEF 454



Fabric

EE/EEF 452



Fabric

EE/EEF 453



Natural Fabric

EE/EEF 455



Tweed

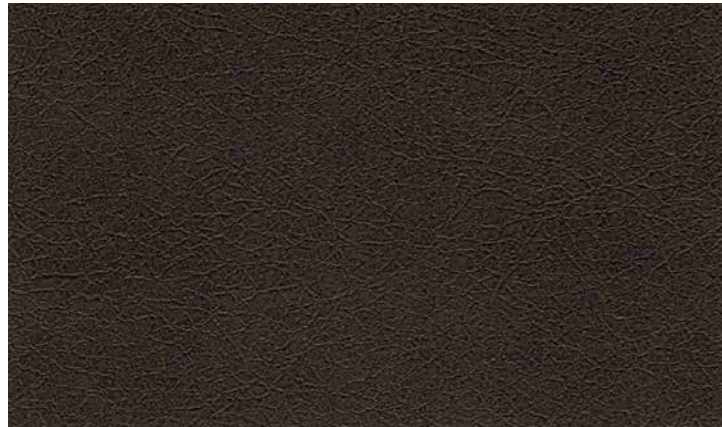
VE 4000



Metal Leaf

VE 4004

Basic Leather



Leather

EE 460



Leather

VE 410

WOOD

WOOD

VONT INTERIOR FILM NEW COLLECTION



EE /EEF 3084

* The images are for illustrative purposes and may differ from actual product.

Multi Printing Wood



Vintage Oak

R/RF 5012



Oak

R 5027

EE series



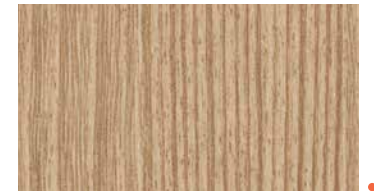
Ash

EE/EEF 3084



Wizard Grain

EE/EEF 3064



Wizard Grain

EE/EEF 3065



Ash

EE 3005



Ash

EE 3005



Ash

EE 3006



Pine

EE/EEF 3069



Wizard Grain

EE/EEF 3066



Primary Oak

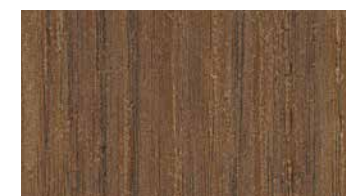
EE/EEF 3007

X series



Oak

X 904



Golden Teak

X 940

O series



Pearl Ash **0 2010**



Sycamore **0 158**



String Wood **0 402**



Elm **0 217**



Stripe Wood **0/OF 326**



Oak **0 2006**



White Ash **0/OF 2001**



Oak **0/OF 960**



Maple **0/OF 388**



Birch **0/OF 225**



full image

Multi Wood **0 253**



Oak **0 971**



Vilora **0/OF 284**



Oak **0/OF 207**



Maple **0/OF 349**



Style Bamboo **0 2024**



Walnut **0/OF 227**



Multi Wood **0 253**



Multi Wood **0 256**



Noce **0/OF 03**



Walnut **0 267**



Oak **0 962**

E series



E series



Sonoma Oak **E/EF 167**



Oak **E/EF 361**



Oak **E/EF 40**



Oak **E 98**



Oak **E/EF 82**



Cherry **E 1118**



Sonoma Oak **E/EF 167**



Oak **E 56**



Acacia **E/EF 10**



Ash **E 141**



Montaigne Walnut **E 385**



Acacia **E/EF 186**



Compile Wood **E/EF 148**



Antique Wood **E 230**



Maple **E/EF 20**



Compile Wood **E/EF 282**



Washed Oak **E/EF 1114**



Oak **E/EF 169**



Teak **E/EF 09**



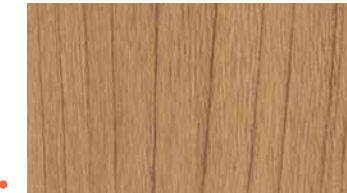
Castagno Oak **E/EF 381**



Oak **E/EF 170**



Akagashi **E/EF 237**



Cherry **E/EF 101**



Cherry **E 26**



Cherry **E/EF B1**



Cherry **E/EF 31**



Castagno Oak **E/EF 383**

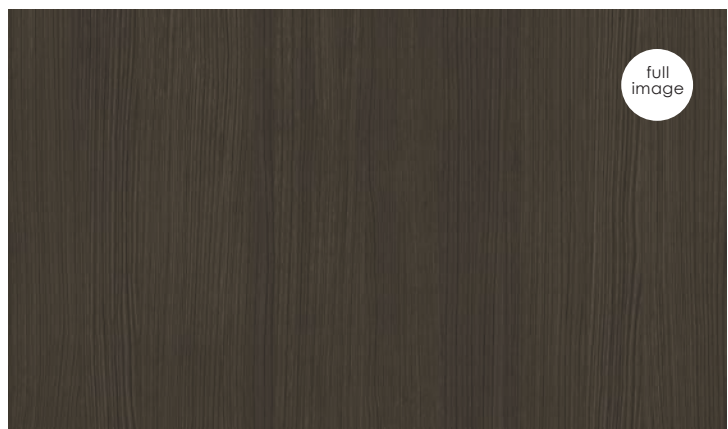


Cherry **E 23**

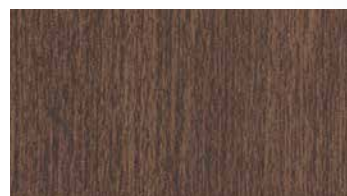


Cherry **E/EF 28**

E series



Antique Wood E/EF 1109



Anegre E/EF 1143



Sapele E/EF 243



Ash E/EF 1103



Ash E/EF 164



Walnut E/EF 61



Ash E 1116



Antique Wood E/EF 1109



Black Wood E/EF 52



E/EF 1109
The images are for illustrative purposes and may differ from actual product.

TILE

TILE

VONT INTERIOR FILM NEW COLLECTION



FT 8001

* The images are for illustrative purposes and may differ from actual product.



Concrete

FT 8003



Travertine

FT 8004



Herringbone

FT 8001



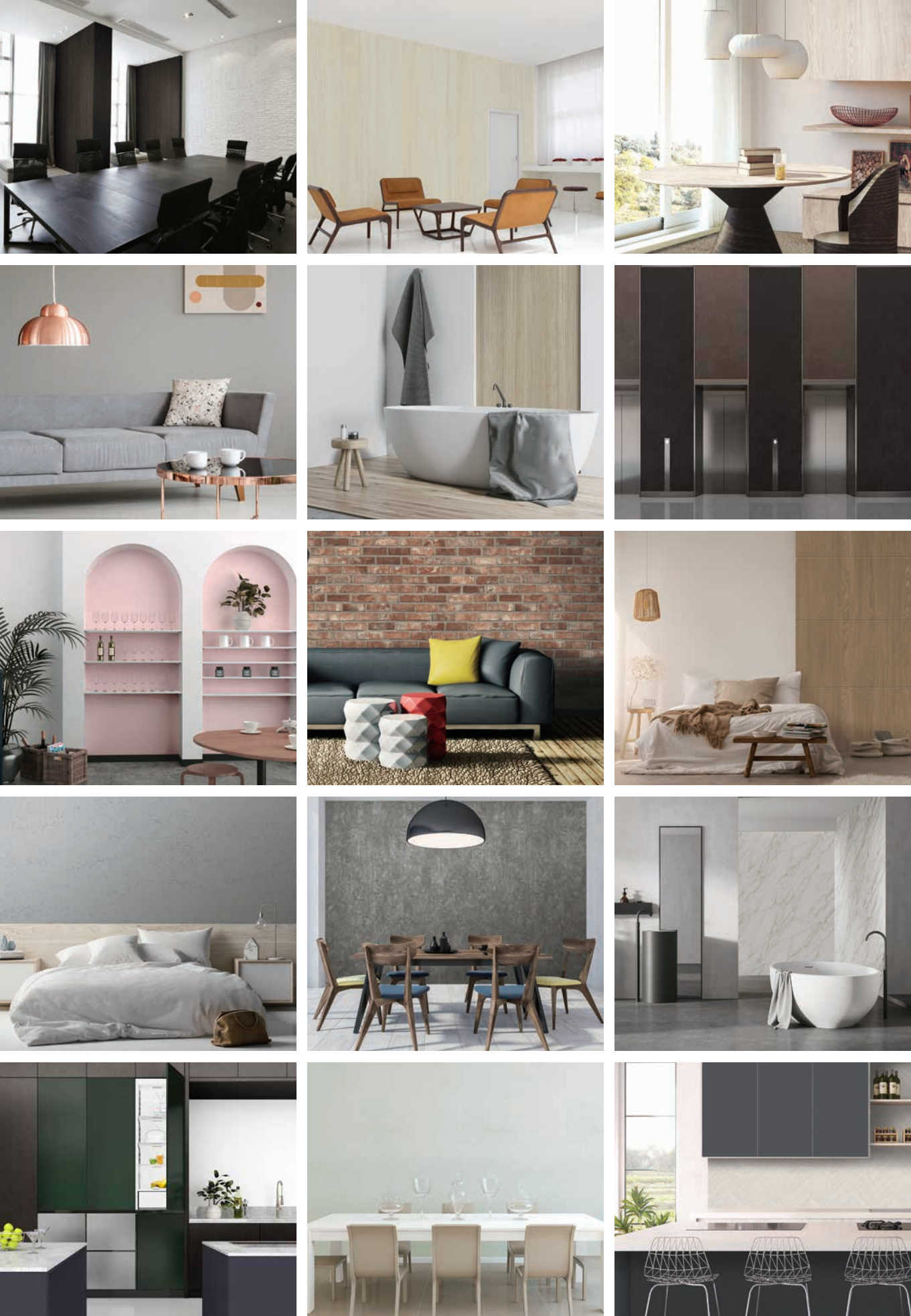
Herringbone

FT 8000



Compile Wood

FT 8002



APPLICATION

Note on Applying Vont Interior Film

1. Preparation

1. Check the substrate type and condition before film application to prevent potential issues.
2. Clean or polish the substrate with sandpaper. Remove contaminations such as grease or oil with alcohol. Make sure the substrate is completely dry.
3. Inspect the product before installation for desired specifications.
4. Maintain a stable working environment by monitoring humidity and keep the room temperature between 15°C to 25°C if possible.

2. Primer Treatment

1. Apply an adequate amount of primer to the substrate surface once or twice.
2. Allow the primer to dry for at least two hours before proceeding.

3. Application

1. To account for possible slight color differences between different product lot numbers, it is advisable to verify and re-confirm the color with the previous production lot on site before proceeding with the application, especially if the site has already been applied with the same pattern.
2. To ensure proper adhesion, it is recommended to sand the substrate surface to make it clean and flat, and to use primer to reinforce the adhesion.
3. After allowing sufficient drying time for the primer surface, smooth the surface with sandpaper and clean any overlapping sections to remove any foreign matter.
4. Apply pressure using tools like squeegees to enhance adhesion strength.
5. Due to the nature of PVC, the interior film may shrink when exposed to heat. To avoid this, it is important to carefully apply the film when applying with heat.

4. Product Storage and Precautions

1. Avoid moisture and direct sunlight, and refrain from using it outdoors to maintain its quality and durability.
2. Extended exposure to sunlight or UV may cause the surface to become discolored.
3. Please note that if the product is left unused for an extended period of time after opening the box, it may develop cracks on the surface and the adhesion may weaken.

* Copying or using the contents published in this sample book without authorization is strictly prohibited.
 * There may be slight color variations between the products shown in the sample book and the actual product.
 * Slight color differences might occur between different product lot numbers, so it is recommended to verify the color prior to application.